

OK KINO

COLLECTION 02



LOOK 1 — SCULPTURAL LIGHT WOOL DRESS WITH WIDE LEG SILK PANTS,
BRANCUSI INSPIRED EARRINGS WITH UPCYCLED METAL.



'WREATH' HEAD ACCESSORY



LOOK 2 — TRENCHCOAT SUIT. TRADITIONAL WOOLEN SHAWL IS WORN OVER THE 'WREATH' HEAD ACCESSORY.



OK KINO METAL EARRINGS SHAPE COMES FROM THE BRONZE SCULPTURE 'SLEEPING MUSE' CREATED BY CONSTANTIN BRANCUSI.



LOOK 3 — TEXTURED WOOL JACKET WITH CURVED SLEEVES AND FOLDED COLLAR, PANTS WITH SHARPLY PRESSED PLEATS THROUGH THE STRAIGHT LEGS.





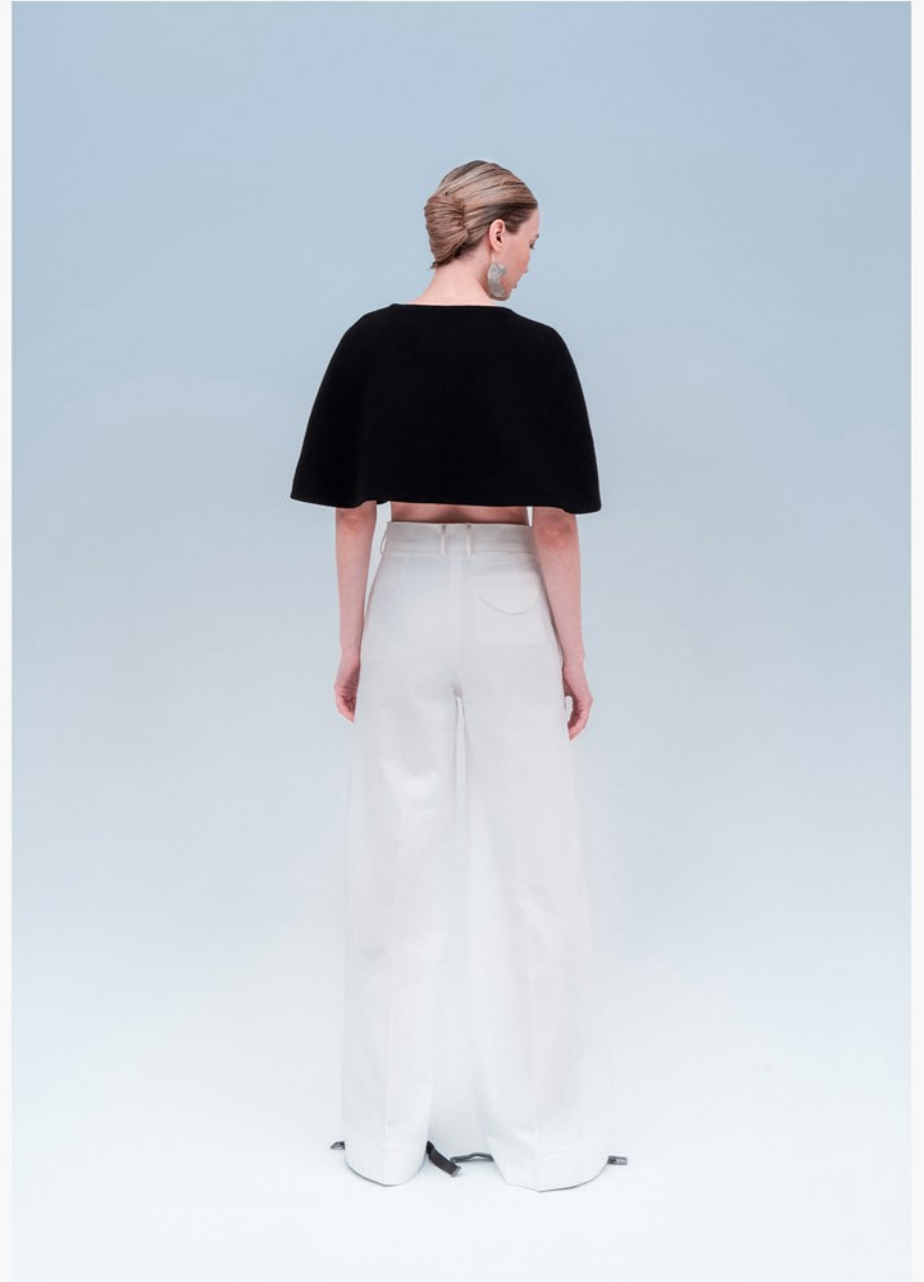
LOOK 4 — TEXTURED COAT WITH AN EXTRA LONG BELT AND WOOL SUIT.





LOOK 5 — V-NECK DRESS WITH THE APPLIED 'PETALS' ON THE SHOULDERS. 'PETALS' SHAPE COMES FROM THE BRONZE SCULPTURE 'SLEEPING MUSE' CREATED BY CONSTANTIN BRANCUSI.





LOOK 6 — FIGURED WOOL CAPE WITH A FOLDED COLLAR AND WIDE PANTS WITH SHARPLY PRESSED PLEATS.



LOOK 7 — 'IA' DRESS WITH A SHAPED BELT. THE GEOMETRY OF THE BELT IS IMPRESSED BY THE WORK OF CONSTANTIN BRANCUSI 'ENDLESS COLUMN'.





LOOK 8 — VOLUMINOUS BLOUSE WITH A FIGURED NECKLINE AND SLIM TROUSERS.



**OK KINO
CONTACT PERSON**

DARYA GOLNEVA

WORK EMAIL
HELLO@STUDIOOKKINO.COM

PERSONAL EMAIL
DARYAGOLNEVA@GMAIL.COM

WWW.STUDIOOKKINO.COM

